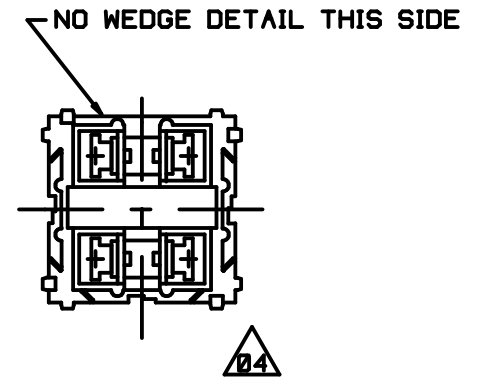
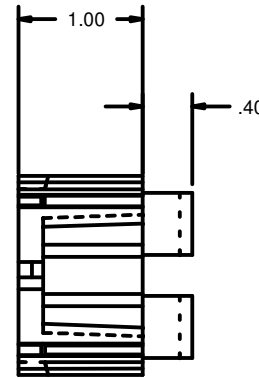
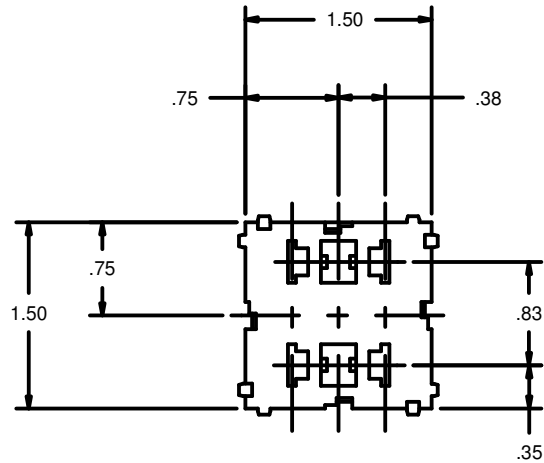


REV	REVISION DATE	RELEASE NUMBER	DESCRIPTION	DRAWN BY	CHECKED BY	APPROVED BY
00	1-22-01	2512	RELEASED FOR PRODUCTION	SJB	JCB	REF
01	6-10-02	2905	ADDED EAR DETAILS ON SMOOTH SIDE	SJB	JCB	REF
02	8-1-02	2957	REMOVED CENTER RIBS ADDED WEDGE DETAIL	SJB	JCB	REF
03	5-05	3957	REMOVED GREY MATERIAL AND PART #PT-059236 BK	SJB	JCB	REF
04	3-09	5334	CHANGED BACK VIEW TO CORRESPOND WITH PART	SJB	JCB	REF



NOTES:

- 1- MAT'L.- NYLON 6-6 GLASS FILLED
FARGO NO. CP-N66BLKHR
- 2- ACCEPTS TERMINAL CODE 274
(PACKARD MAXI-FUSE TERMINAL)
- 3- ACCEPTS SECONDARY LOCK
FARGO NO. PT-059174
- 4- MAXIMUM CURRENT OF 160 AMPS. PER BLOCK
- 5- MAXIMUM OPERATING TEMPERATURE NOT
TO EXCEED 125° C

FARGO NO. PT-059236

FILE # 010106-1	SHEET 1 OF 1	FARGO ASSEMBLY OF PA P.O. BOX 550 NORRISTOWN, PA 19404 PHONE: 610-272-6850 FAX: 610-272-6858		OUR COMPANY GOALS 1. QUALITY 2. CUSTOMER SERVICE 3. GROWTH
UNLESS STATED OTHERWISE, DIMENSIONS ARE IN INCHES, AND TOLERANCE ARE:	THIRD ANGLE PROJECTION	ELECTRICAL SYSTEMS ASSEMBLY AND DESIGN		
.X +/- .005		DRAWN BY	DATE	TITLE
.XX +/- .010		CHECKED BY		MAXI FUSE MODULE
FRACTIONAL +/- 1/64		APPROVED BY		2 POSITION, 1-1/2" X 1-1/2"
ANGULAR +/- 30 MIN		SCALE	FULL	DRAWING NUMBER
THIS DOCUMENT CONTAINS PROPRIETARY INFORMATION AND IS NOT TO BE USED IN ANY WAY DISSENTIAL TO THE INTEREST OF FARGO ASSEMBLY OF PA, INC.		DRAWING NUMBER		REVISION
		C7353-99-00		04