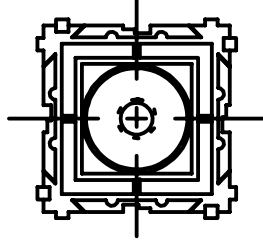
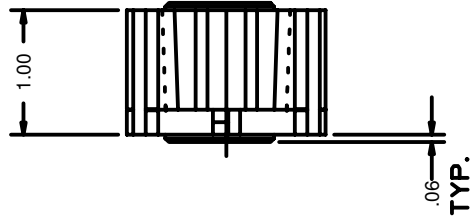
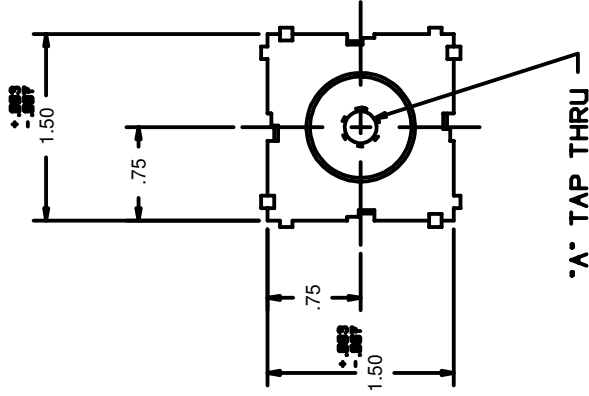


REV	REVISION DATE	RELEASE NUMBER	DESCRIPTION	ISSUED BY	DESIGNED APPROVED BY
A	7-21-94		ADDED ASSY. #100763, ADDED PART #074230, REMOVED MAX TORQUE TAB	JGL	SJB
00	8-5-98	1754	REDRAWN ON CADD6, ADDED ASSY. #100763 BK ADDED DILL BLOCK TO CHART.	SJB	JCB
01	5-05	3957	REMOVED PART #100763 BK	SJB	JCB
					REF



NOTES:

1- MATERIAL: NYLON 6/6. 13% GLASS FILLED



ASSEMBLY NO.	"A" TAP	INSERT PART NO.	DILL BLOX NO.	RECOMMENDED TORQUE
100763	M8 X 1.25	074230	059218	108 LB-IN (12.0 N.m)
100719	5/16-18	074193	059218	101 LB-IN (11.4 N.m)
100718	1/4-20	074192	059218	50 LB-IN (5.5 N.m)

FILE #	SHEET (OF)	THROW AWAY PRELIMINARY	TITLE
980605-1	1		FARGO ASSEMBLY OF PA
UNLESS STATED OTHERWISE, DIMENSIONS ARE IN INCHES. DIMENSIONS ARE IN MILLIMETERS AND TOLERANCES ARE:			
X +/- .005	XX +/- .005	XXX +/- .005	FARGO COMPANY HEADQUARTERS P.O. BOX 550 NORRISTOWN, PA 19404 PHONE: 610-272-6850 FAX: 610-272-6858
XX +/- .005	XXX +/- .005	FRAC TIONAL +/- 1/64	OUR COMPANY GOALS QUALITY SERVICE COST
ANGULAR +/- 30 MIN	SCALE: FULL	ELECTROCAL SYSTEMS ASSEMBLY AND DESIGN	
THIS DRAWING CONTAINS PROPRIETARY INFORMATION AND IS NOT TO BE USED IN ANY MANNER WITHOUT THE WRITTEN CONSENT OF FARGO ASSEMBLY OF PA, INC.			
DRAWING NUMBER			REVISION
C-7299-99-01			01