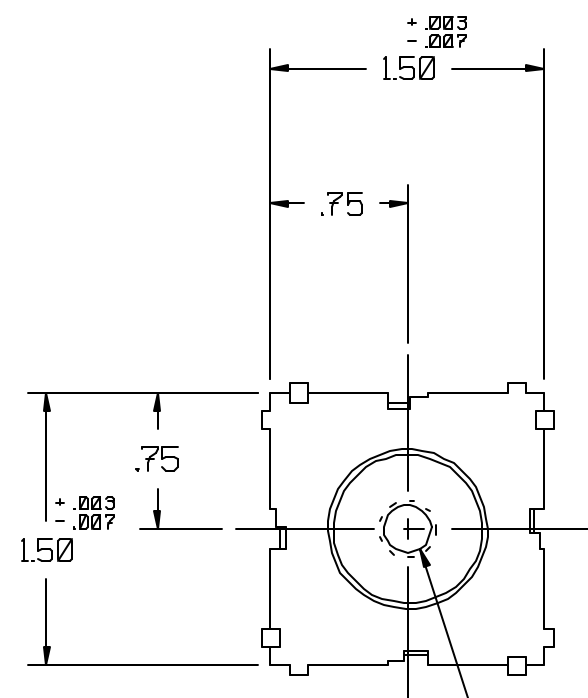
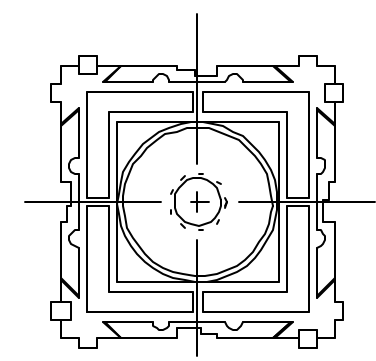
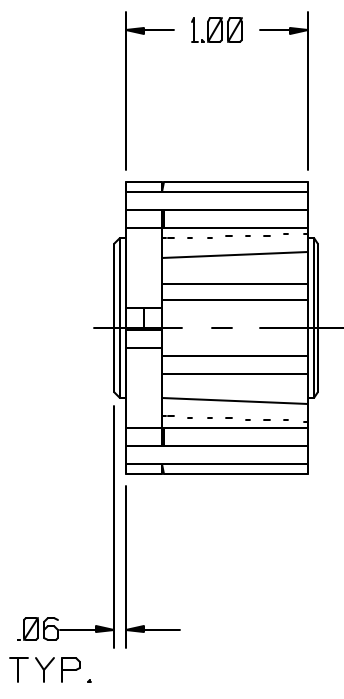


REV	REVISION DATE	RELEASE NUMBER	DESCRIPTION	DRAWN BY	CHECKED BY	APPROVED BY
A	7-21-94		ADDED ASSY. #100763. ADDED PART #074230. REMOVED MAX TORQUE TAB	JGL	SJB	
00	8-5-98	1754	REDRAWN ON CADD6. ADDED ASSY.#100763 BK ADDED DILL BLOCK TO CHART.	SJB	JCB	REF



"A" TAP THRU



NOTES:

- 1- MATERIAL: NYLON 6/6. 13% GLASS FILLED
- 2- SEE DRAWING #254-00-42 FOR POWER STUD DETAILS.

ASSEMBLY NO.	"A" TAP	INSERT PART NO.	DILL BLOX NO.	RECOMENDED TORQUE
100763 BK	M8 X 1.25	074230	059218 BK	108 LB-IN (12.0 N.m)
100763	M8 X 1.25	074230	059218	108 LB-IN (12.0 N.m)
100719	5/16-18	074193	059218	101 LB-IN (11.4 N.m)
100718	1/4-20	074192	059218	50 LB-IN (5.5 N.m)



FILE # 980805-1	SHEET 1 OF 1	FARGO ASSEMBLY OF PA P.O. BOX 550 NORRISTOWN, PA 19404 PHONE: 610-272-6850 FAX: 610-272-6858
UNLESS STATED OTHERWISE: DIMENSIONS ARE IN INCHES, AND TOLERANCE ARE:	THIRD ANGLE PROJECTION	OUR COMPANY GOALS 1. QUALITY 2. DELIVERY 3. FAIR PRICE 4. GOLDEN RULE
.X +/- .025	DRAWN SJB DATE 8-11-98	ELECTRICAL SYSTEMS ASSEMBLY AND DESIGN
.XX +/- .015	CHECKED JCB DATE 8-13-98	TITLE: DILL BLOX POWER TAP ASSEMBLY
.XXX +/- .005	APPROVED REF DATE XX	DRAWING NUMBER C-7299-99-01
FRACTIONAL +/- 1/64	SCALE: FULL	REVISION 00
ANGULAR +/- 30 MIN		
THIS DOCUMENT CONTAINS PROPRIETARY INFORMATION AND IS NOT TO BE USED IN ANY WAY DETRIMENTAL TO THE INTEREST OF FARGO ASSEMBLY OF PA, INC.		